

### SPECIFICATIONS

#### Features/Benefits



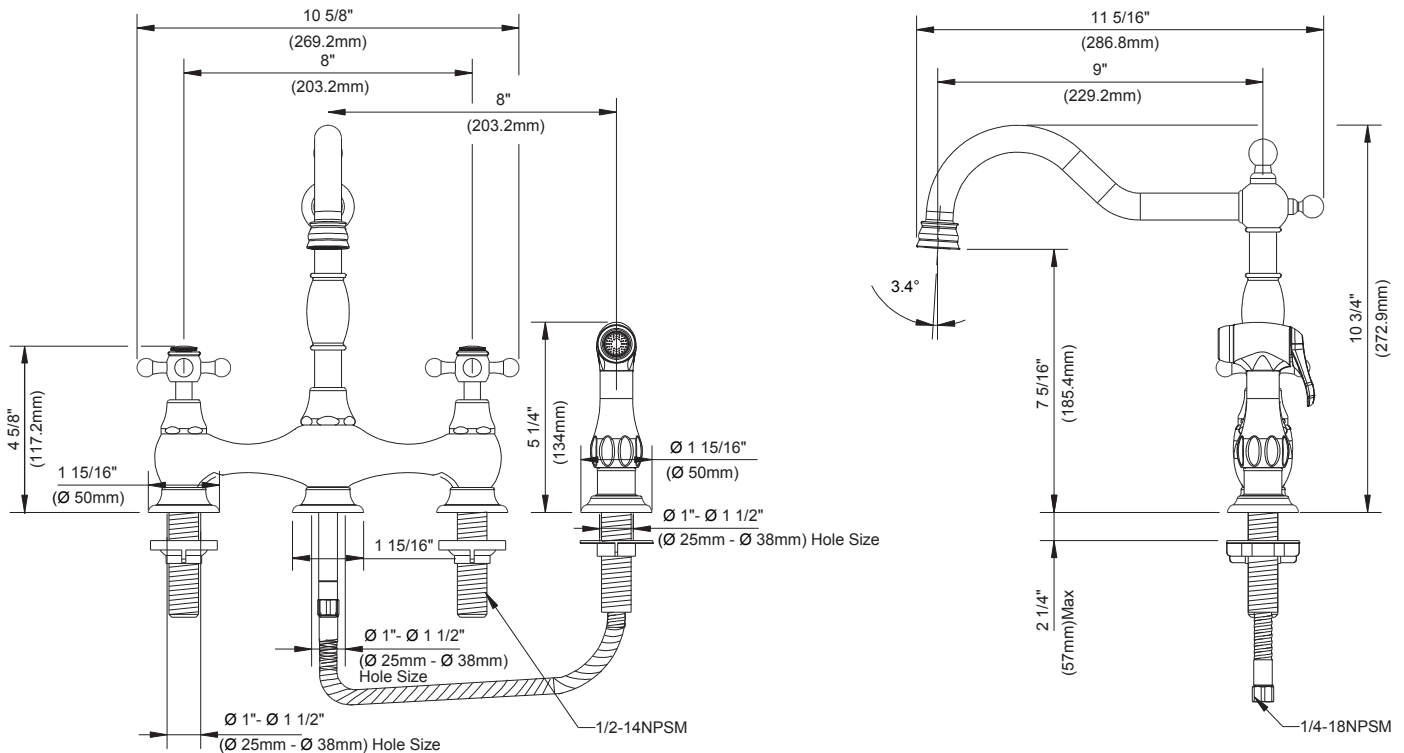
- 10 3/4" Spout Height, 9" Spout Reach
- 1.75 gpm (6.6 L/min) When Used with DA500186N Aerator
- Alternative Flow Rates Available with Spray Water Stream
  - 1.5 gpm (5.7 L/min) When Used with DA500973N Aerator
- Includes Matching Side Spray
- Ceramic Disc Cartridge
- 360 Degree Swivel Spout
- 4-Hole Installation
- Optional Temperature Indicators Included

#### Available Color/Finishes

Chrome

Please see [gerberonline.com](http://gerberonline.com) or current price list for available finishes. Finish is defined by additional suffix.

#### Standards & Certifications



#### Submittal Information:

Name: \_\_\_\_\_  
Location: \_\_\_\_\_

Contractor: \_\_\_\_\_  
Contact #: \_\_\_\_\_